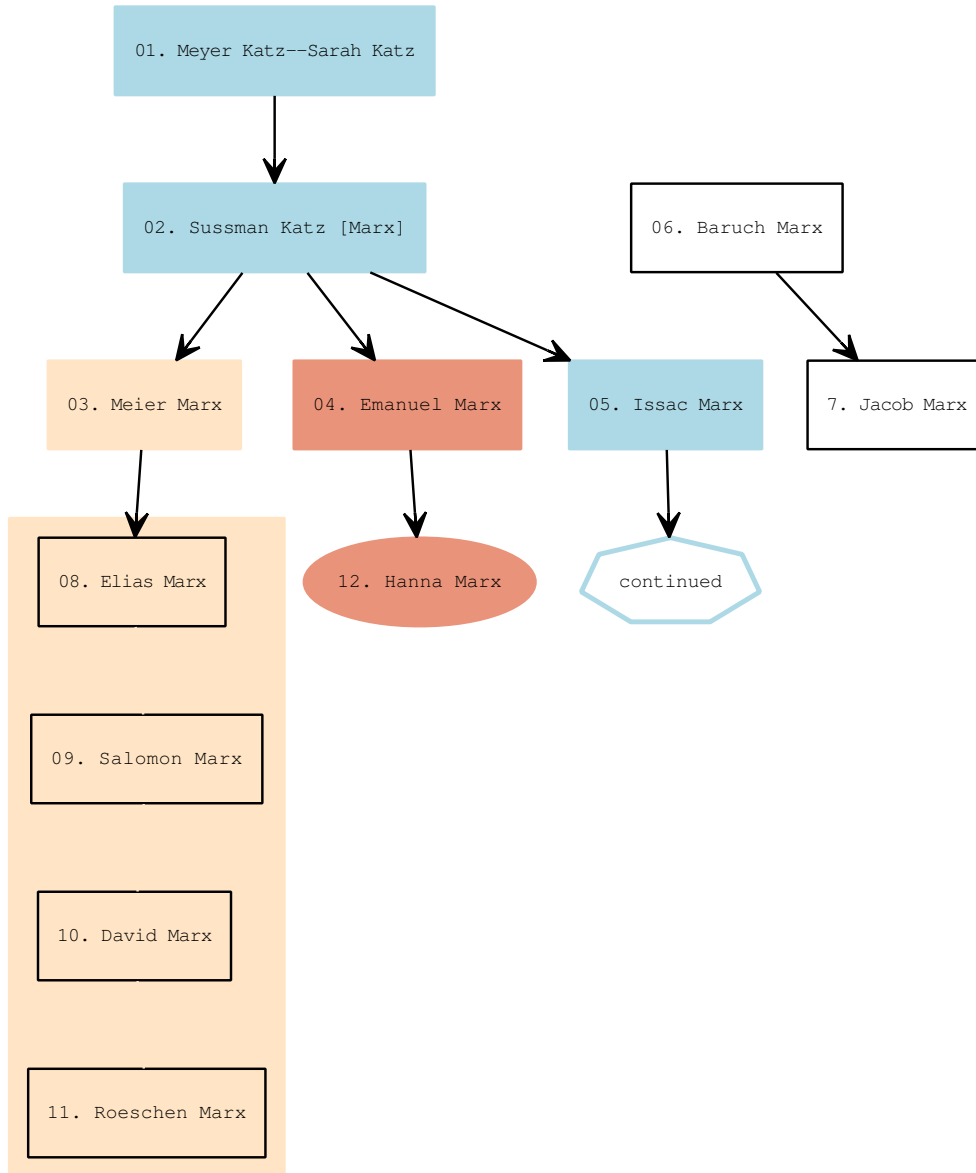


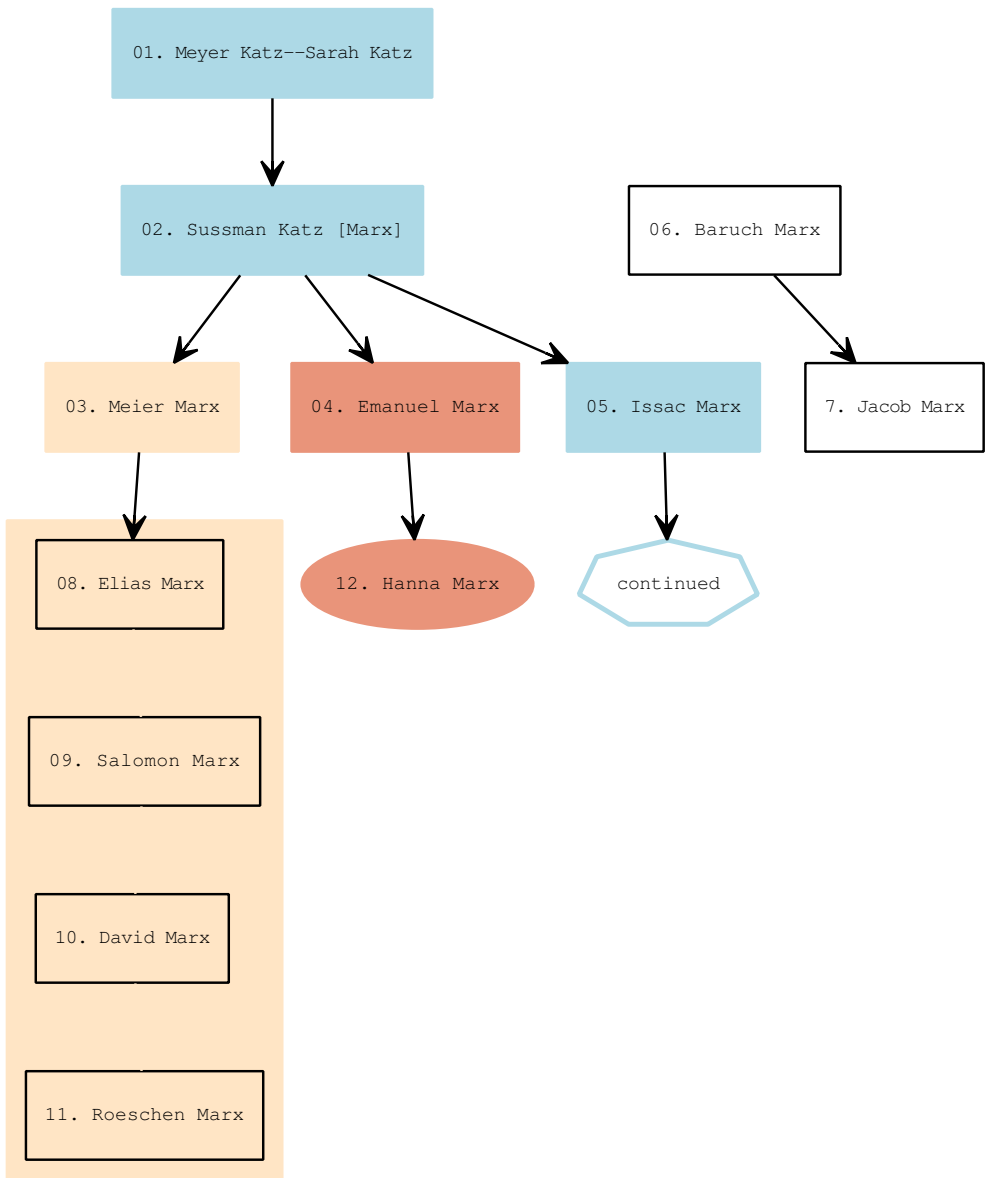
# The Marz-Katz Families of Gräsen

## The First Generations

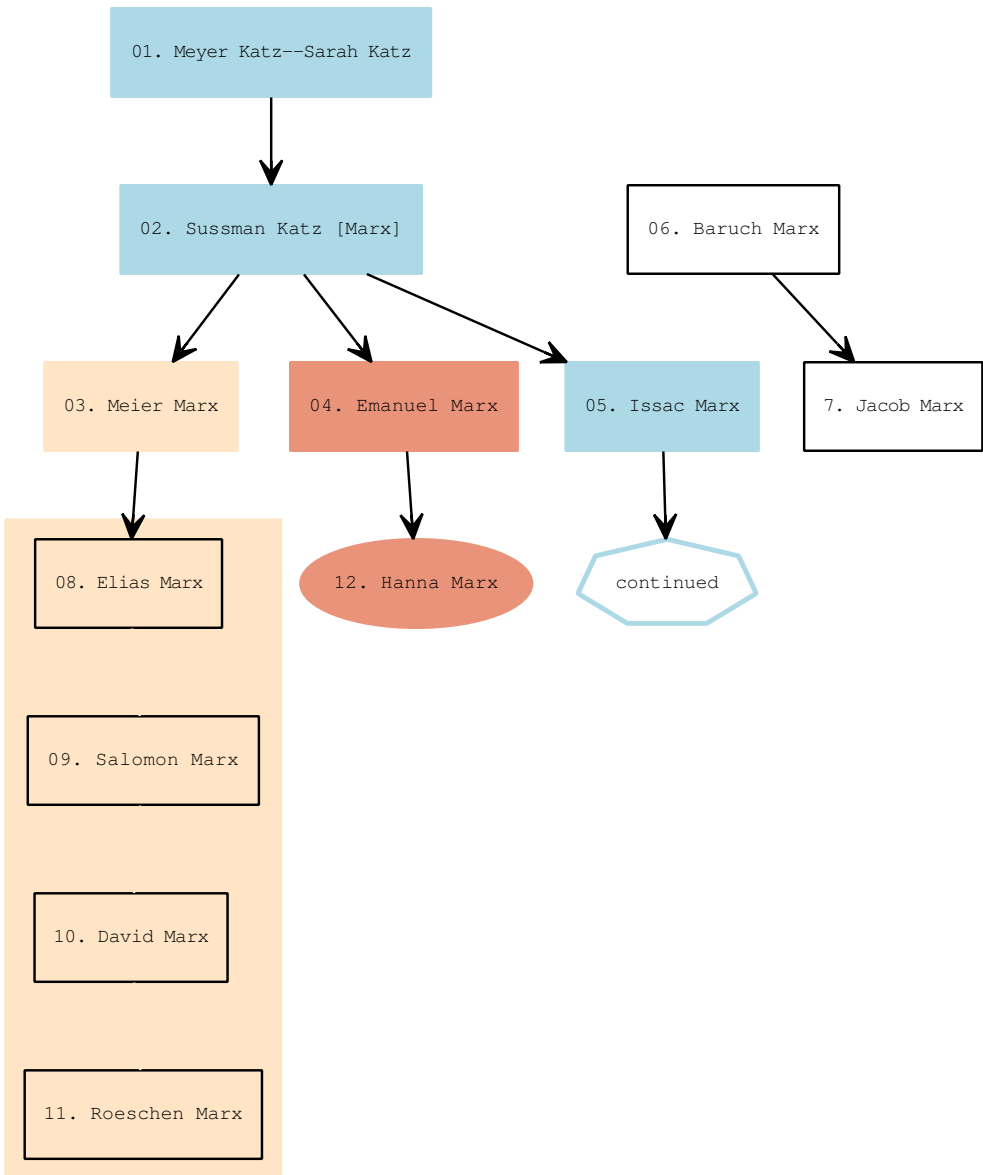
On the first page the EPS file is simply imported.



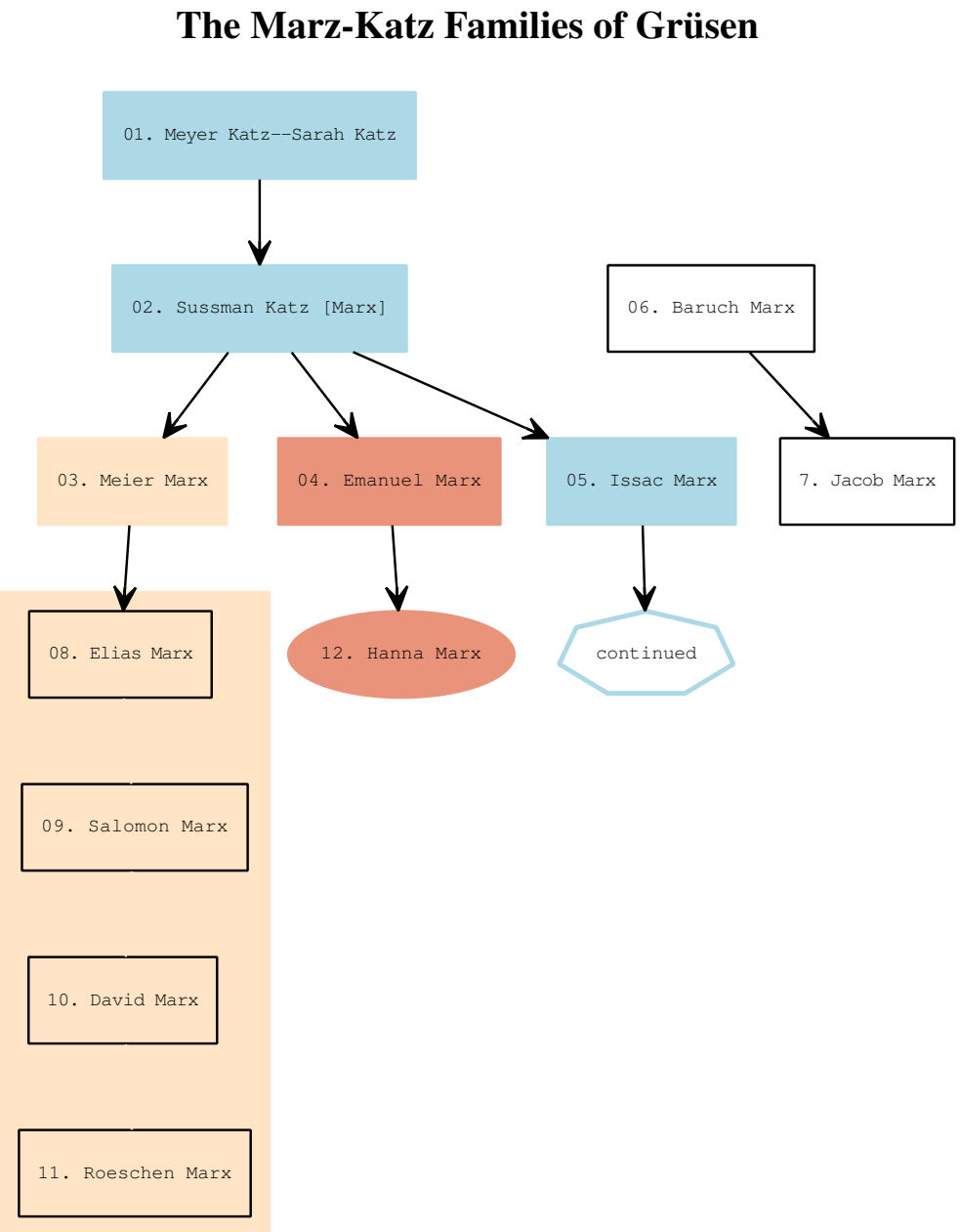
On the second page the EPS file is imported and rotated. There is no attempt to change the position:



On the third page the rotated graph is pushed down via \vskip:



On the fourth page we use the `\rput` command [pg. 43, section 24: "Placing and rotating and whatever" of the PSTricks manual]



Now we use `\rput` to put a “heading” up the left side of the page  
We can also continue to add in text—left to right—after the chart simply via `\vskip 18.0 cm`. *PSTricks* can do many other things.