

Suite Metering Presentation

“THE BARCLAY”

Energy Ottawa Inc.

- Energy Audits
- Turnkey Energy Projects
 - Lighting
 - Boilers
 - Chillers
 - Automation
 - Water
 - Solar
 - Metering

The Basics

Each Suite Owner is billed for their actual electricity use.

Could see 15% to 30% savings on electricity

The Corporation remains responsible for electricity use in common areas.



The Technology



- Panels and sensors measure and record suite usage
- Remote communication with Hydro Ottawa
- Regular residential billing
- Ontario Energy Board regulated
- Measurement Canada approved

The Benefits

For the Suite Owner:

- Power to control electricity usage and costs
- Wise electricity use reflected in your electricity bill
- Conservation programs

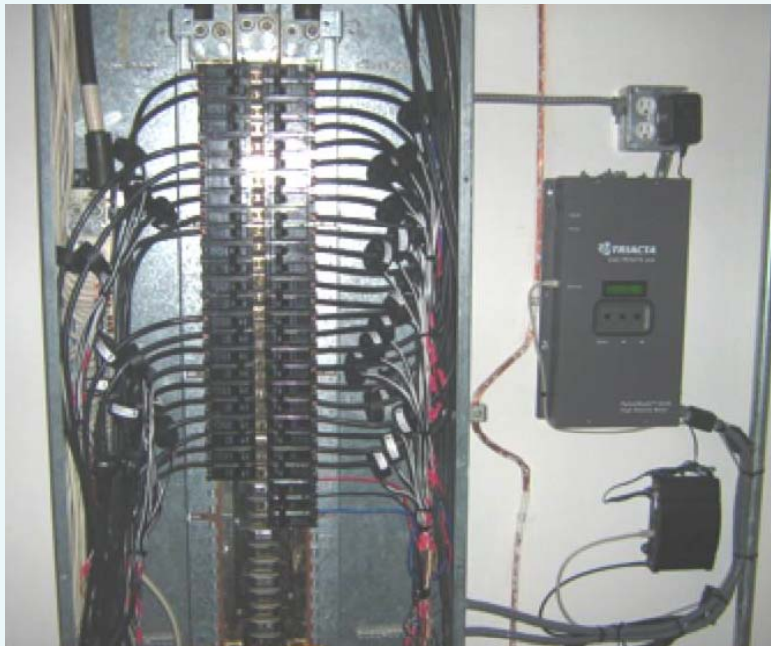
For the Condo Corporation:

- Suite Owners responsible for their own electricity consumption and costs
- Reduces a significant line item from annual budget

- Set up account with Hydro Ottawa
 - Original Account set-up charge of \$30 (waived)
 - No Security Deposit Required
 - Bi-monthly electricity bills
- Power interruptions associated with installation

[illegible]

Considerations for the Condo Corporation



One time costs:

- Single line diagram
- Engineering
- Common load infrastructure changes
- Common Element metering

The Hydro Ottawa Partnership

Customer Service Excellence

- 89% customer satisfaction in third-party administered survey

Regulated Rates

- Rates regulated by Ontario Energy Board

Locally owned and operated

- Serving the Ottawa area for more than 100 years



Evaluation Phase

Walk Through



Meet with Board



Engineering



Hydro Ottawa Review



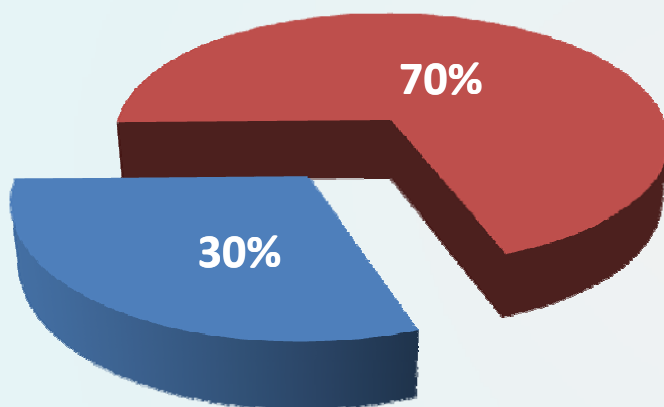
Proposal



The Barclay (94 Suites)

Hydro Ottawa Investment

- Meters & Installation \$57,618
- Investment per Suite **\$607**



■ Hydro Ottawa ■ Customer

Customer Investment

- Public Load Metering \$18,109
- Vault Shutdown n/c
- Electrical Work \$88,276
- Cabinets, communication, cabling, etc. \$18,619
- Engineering \$7,500
- **Total \$132,524**
- **Investment per Suite \$1,395**
- **Option (Superintendent) \$4,390**

Electrical Interruptions will be required

Implementation Phase

Final Design

Installation

Commissioning

Trial Period (60 Days)

Go Live

Summary of Roles and Responsibilities

Energy Ottawa /Hydro Ottawa

- Project Manager
- Partners - Engineers, Contractors, Manufacturers
- Support
- Turnkey

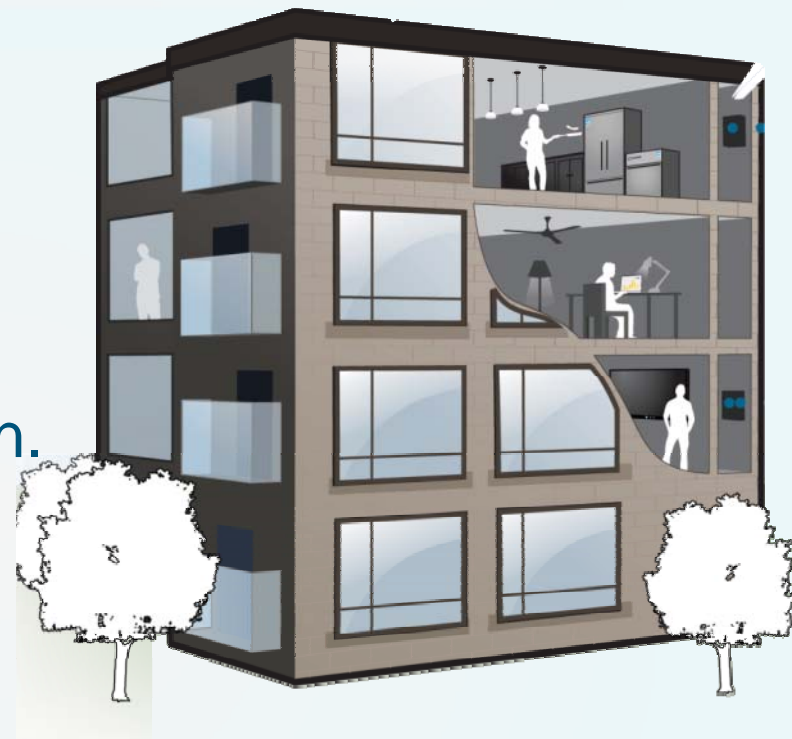
Corporation

- Authorization
- Access
- Staff assistance
- File with owner info
- Condo Fee adjustments

The Right Choice

Empowers Suite Owners to
make responsible choices
about their energy use.

Promotes energy conservation.



Typical Questions

What would be a typical monthly bill amount?

- 800 kWh is the average monthly consumption for residential consumers in Ontario. **Individual usage will vary.**
- Based on this **800 kWh** consumption the bill would be: **\$107.21**
- For **1,000 kWh** consumption the bill would be: **\$131.79**
- For **1,200 kWh** consumption the bill would be: **\$158.48**
- These amounts include the HST and Ontario Clean Energy Benefit credit
- Currently Hydro Ottawa bills every two months so this amount would double
- These calculations are based on the November 1st, 2011 Tiered Rates

Typical Questions

What type of charges would apply if they shut off their power (not likely to happen) and went to Florida for 6 months?

- Shutting the power off in the individual units would not be recommended due to risk of property damage
- There is a monthly Delivery Fixed Charge of: \$10.14/month and a Regulatory Fixed Charge of \$0.25/month that are not associated with consumption
- Therefore, there would be a minimum charge of: **\$21.13/bi-monthly bill** includes HST and the OCEB credit.

Typical Questions

What are “Delivery Charges”

- Charges on the Delivery line approved by the Ontario Energy Board include:
 - **Distribution Costs:** The cost to deliver electricity to your home or business.
 - **Transmission Costs:** The costs to deliver electricity from generating stations to your utility along a high-voltage transmission system (called the transmission grid).
 - A portion of these costs are fixed and the rest are variable and change depending on the amount of electricity that you use.
- As in the example, on a 800kWh consumption the Delivery Charge is: **\$35.48**

Typical Questions

How would they see their data if they felt that their meter was incorrect?

- Hydro Ottawa would print the meter reading and consumption on every bill
- Hydro Ottawa would print the dates of the service period that they are billing for
- Hydro Ottawa would also print a monthly and daily consumption history on every bill
- Please refer to **Interactive Bill** screenshot slide

Typical Questions

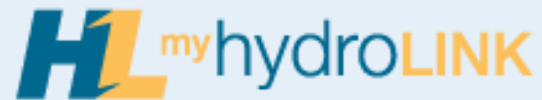
When will we get to TOU?

- TOU rates are currently not available for suite meters
- Eventually, these customers will transition to TOU rates
- No timeframe has been established

Typical Questions

When/what web access will they have to their usage data?

- My Hydro Link is a one-stop customer service connection to Hydro Ottawa that offers registered customers detailed information such as usage history, billing history and payment history
- My Hydro Link also offers many self-serve functions
- Please see **My Hydro link** screenshots



Viewing:
O'GRADY,KEVIN
kdogrady
2511643000

[Home](#)

[My Electricity Usage](#) ▾

[My Bill](#) ▾

[Moving?](#)

[My Profile](#) ▾



My Electricity Usage

» [My Electricity Usage](#)



Moving?

» [Moving In / Moving Out?](#)



Payment Methods

» [Pre-Authorized Payment](#)



My Bill

» [E-Billing](#)

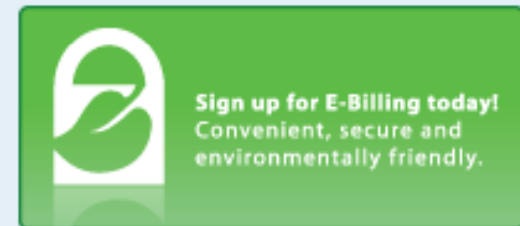
» [My Billing/Payment History](#)



My Profile

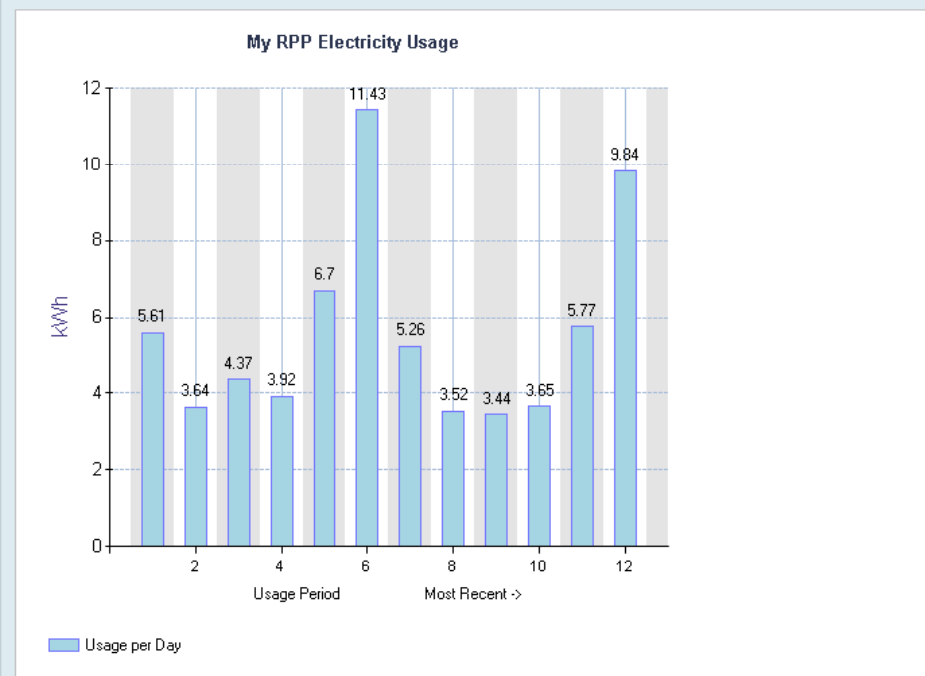
» [Add / Remove Accounts](#)

» [Manage Profile](#)



My RPP Electricity Usage

This is your RPP data for the service address that you have selected. You can view up to two years of your electricity consumption data, displayed based on your regular bill intervals (see Periodical Information below).



☒ View Chart

☒ Show Rate Per Day Usage

Period	From Date (yyyy-mm-dd)	To Date (yyyy-mm-dd)	Number of Days	Adjusted Consumption	Usage per Day
1	2009-10-01	2009-11-03	33	185.1576	5.61
2	2009-11-03	2010-01-04	62	225.4992	3.64
3	2010-01-04	2010-03-04	59	257.5656	4.37
4	2010-03-04	2010-05-05	62	243.084	3.92
5	2010-05-05	2010-07-05	61	408.588	6.70
6	2010-07-05	2010-08-31	57	651.672	11.43
7	2010-08-31	2010-11-01	62	325.836	5.26
8	2010-11-01	2010-12-30	59	207.9144	3.52
9	2010-12-30	2011-03-02	62	213.0864	3.44
10	2011-03-02	2011-05-03	62	226.5336	3.65
11	2011-05-03	2011-07-03	61	351.696	5.77
12	2011-07-03	2011-08-31	59	580.2984	9.84

Typical Questions

Can Suite Owners get their bills online when they are in Florida for 6 months?

- Yes, Hydro Ottawa offers E-Billing
- E-Billing is a convenient, secure and environmentally friendly way to view your electricity bill online

Residential Rates



Effective November 1 to April 30, 2012

Residential Customer Rates

Electricity* – Regulated Price Plan (RPP):

Tiered

Consumption up to 1,000 kWh per Month	\$0.0710/kWh
Consumption above the Threshold of 1,000 kWh per Month	\$0.0830/kWh

Time-of-Use (winter)

Off-Peak	\$0.062/kWh
Mid-Peak	\$0.092/kWh
On-Peak	\$0.108/kWh

Delivery

Transmission	\$0.0108/kWh
Hydro Ottawa Delivery	\$0.0203/kWh
Hydro Ottawa Fixed Charge per Month	\$10.14
Low Voltage Services Charge	\$0.0002/kWh

Regulatory

\$0.0065/kWh**

Debt Retirement

\$0.00694/kWh***

* The Ontario Energy Board (OEB) sets the RPP rates. RPP prices are reviewed and adjusted twice a year in the spring (May 1) and in the fall (Nov. 1). For RPP Tiered rates, the price threshold – the amount of electricity that is charged at the lower price – changes twice a year for residential consumers. The threshold is **1,000 kWh** per month during a winter season (November 1st to April 30th) and **600 kWh** during a summer season (May 1st to October 31st).

** For Standard Supply Service customers (not purchasing the electricity commodity from an electricity retailer), a monthly administration fee of \$0.25 is added to the regulatory charge to recover a portion of the cost of systems required for the market.

*** For customers of the former Casselman Hydro, this rate is \$0.007/kWh as Casselman Hydro did not own any generating plants.

Your New Bill



www.hydroottawa.com

Questions/Questions : 613-738-6400

Power Outage/Panne d'électricité : 613-738-0188

Service For • Service pour

123 ANYWHERE ST

Account Number • Numéro de compte

12345678901234567890

Meter Number • Numéro de compteur

OTT123456

Account History / Relevé de Compte

Reading Date Date du relevé	kWh	# Days # Jours	kWh / Day kWh / Jour
2011-07-01	1655	62	26.69
2011-05-01	1686	60	28.10
2011-03-03	1707	61	27.98
2011-01-02	1562	63	24.79
2010-11-01	1782	59	30.21
2010-09-04	1678	61	27.50
2010-07-06	1595	62	25.73

Meter Reading Relevé de compteur	83600
kWh Consumption Consommation en kWh	1600.00
Adjusted Consumption Consommation rajustée	1655.04

Bill Date Date de la facture	2011-07-16
---------------------------------	------------

Account Summary • Sommaire de compte

Page 1 of/de 1

Previous Balance/Solde précédent	\$265.83
Payment/Paiement	\$265.83 CR
Electricity Charge/Frais d'électricité	
From/Du 2011-05-01 To/Au 2011-07-01 (62 Days/Jours)	
1200 kWh @ \$0.068/kWh	\$81.60
455.04 kWh @ \$0.079/kWh	\$35.95
HST No. 863391363/No. TVH 863391363	\$15.28
Ontario Clean Energy Benefit/La Prestation ont. pour l'énergie propre (-10%)	\$13.28 CR
Delivery/Frais de livraison	\$70.96
Regulatory Charges/Frais réglementés	\$11.26
Debt Retirement Charge/Règlement de la dette	\$11.10
HST No. 863391363/No. TVH 863391363	\$12.14
Ontario Clean Energy Benefit/La Prestation ont. pour l'énergie propre (-10%)	\$10.55 CR

Due Date Date d'échéance	2011-08-04
-----------------------------	------------

Amount Due Montant dû	\$214.46
--------------------------	----------

Questions?